

DAHUA XVR-X RECORDER END USER GUIDE

Installer Information

CONTENTS

General Operation

Mouse Operation	4
Logging into the System	5
Quick Menu	5
PTZ Control	6

Playback Operation

Time Bar Playback	7
Smart Search	8
Smart Search	9
Intelligent Search	10
Exporting Intelligent Search	11
Clipping Tool	12

Backup & PC Playback

Backup	12
PC Playback	14

Remote Access

Web Browser Operation	16
Web Playback	20
Playback By File	21
Backup	22

GENERAL OPERATION

Mouse Operation



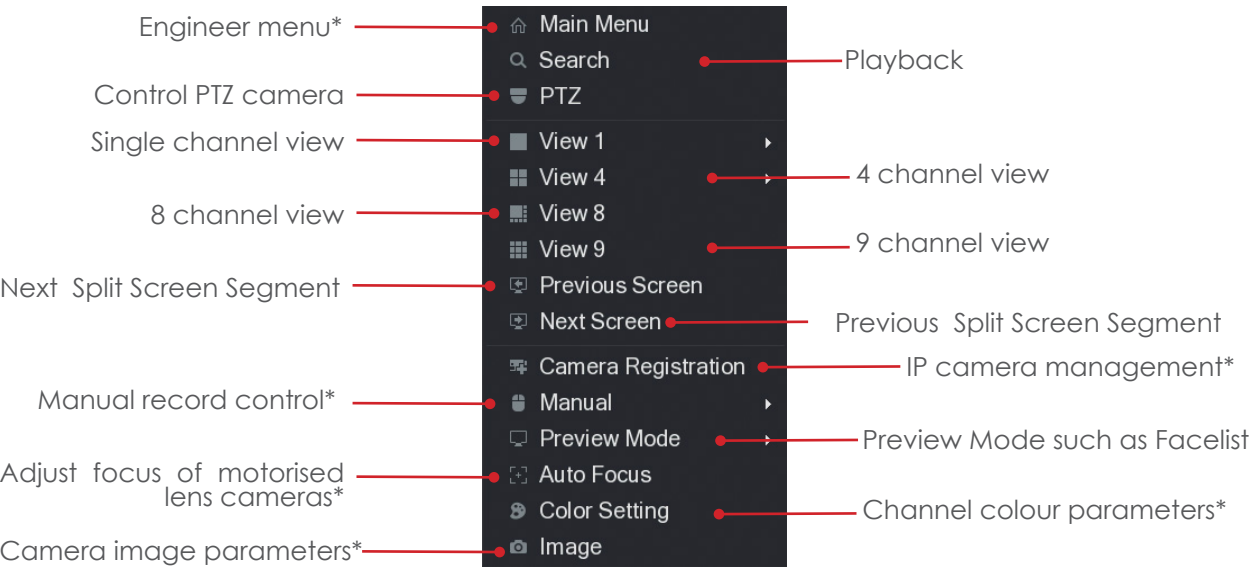
The USB mouse is the primary and recommended method for controlling the system. Listed below are the various functions that the mouse buttons perform.

Left Mouse Button	Enter/Select, Double click to select fullscreen (Live/Playback), Single click > Main Menu (Live)
Right Mouse Button	Back/Exit (Live/Playback), Mouse Menu (Live)
Scroll Wheel	Digital Zoom (Live/Playback)

Mouse Menu

With only a few exceptions, all XVR-X models have the same menu infrastructure. Although there may be some menu differences between models, the majority of features available are the same.

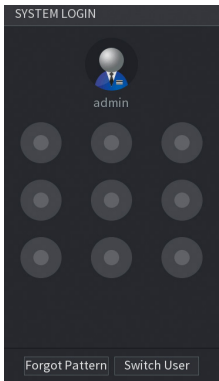
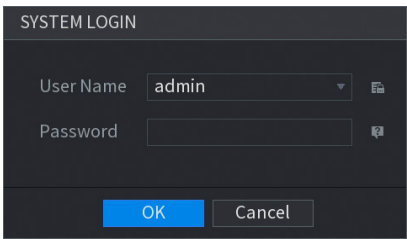
To access features of the system click the right mouse button. 



* Feature is considered an engineer function and may require admin privileges. It is recommended care is taken when accessing these functions.

Logging into the System

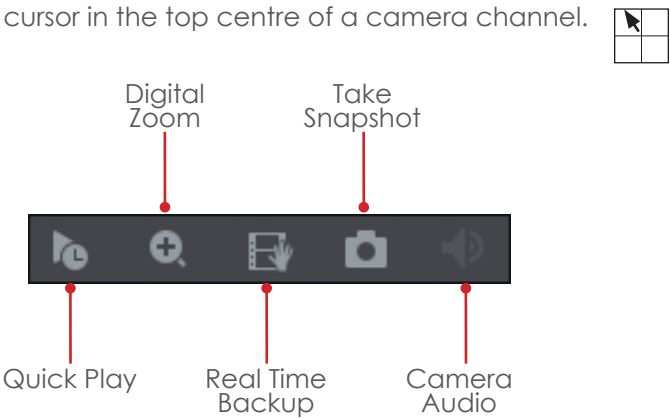
When accessing some functions of the system you must first enter your login credentials. These should of been provided by your CCTV installation engineer.



Select your username from the dropdown menu and enter your password. Click **OK** to log into the system. Depending on the configuration of the system, a draw pattern box may appear instead of a user prompt. If you know the draw pattern, use the left mouse button to draw it on the screen. If you do not know the draw pattern, left click **Switch User** to display the username and password prompt instead.

Quick Menu

For access to some features there is a quick menu bar at the top of each camera window. To access the quick menu bar, hover the mouse cursor in the top centre of a camera channel.



- Quick Play** Instantly playback the channel, the default setting is 5 minutes and can be changed in the engineer menu.
- Digital Zoom** Use Digital Zoom to zoom in on an area of the image. To enable digital zoom click the digital zoom icon, then draw a box in the area of interest using the **left** mouse button. Alternatively digital zoom can be enabled without clicking the toolbar icon, instead simply hover the mouse over the desired camera channel and use the mouse **scroll wheel** to zoom in or out.
- Real Time Backup** With a USB storage device connected, click this icon to copy the real time video to the USB device.
- Take Snapshot** With a USB storage device connected, click this icon to save a still image of the camera to the USB device.

PTZ Control

The PTZ feature is designed to control motorised cameras such as speed domes. To use the PTZ feature, **right** click the desired camera channel and select the **PTZ** option. (Fig 1)

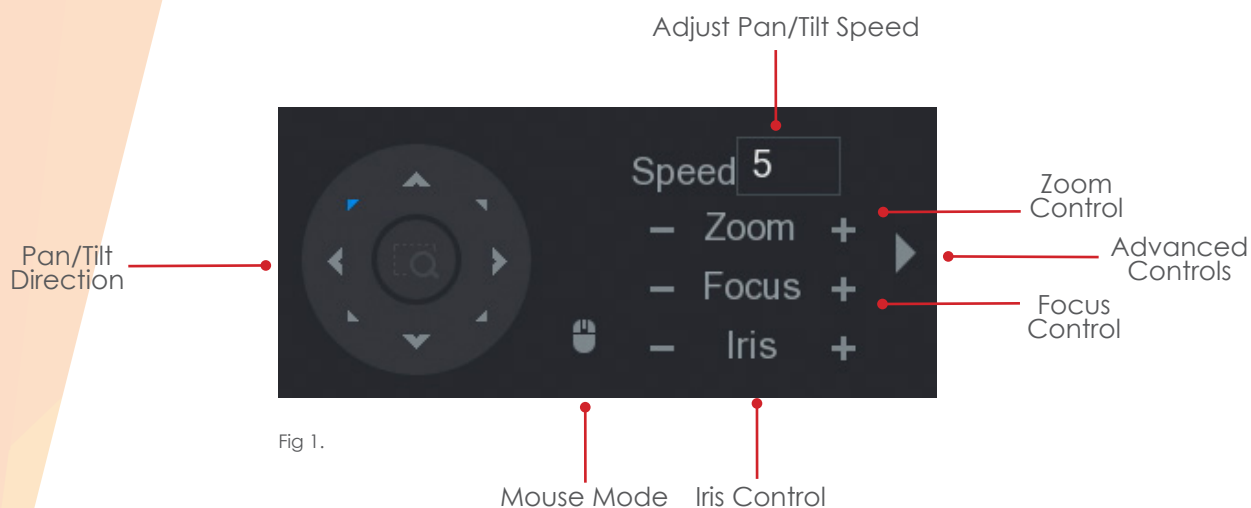


Fig 1.

Advanced PTZ Controls

Left click the right arrow icon to display the advanced PTZ controls the PTZ interface will be extended. (Fig 2)

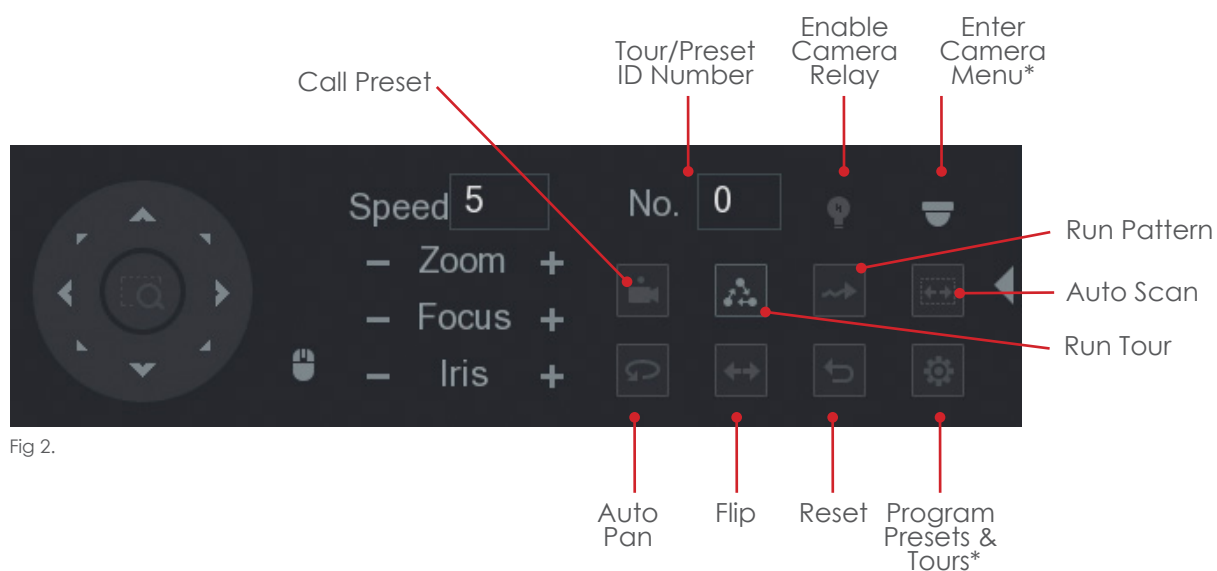


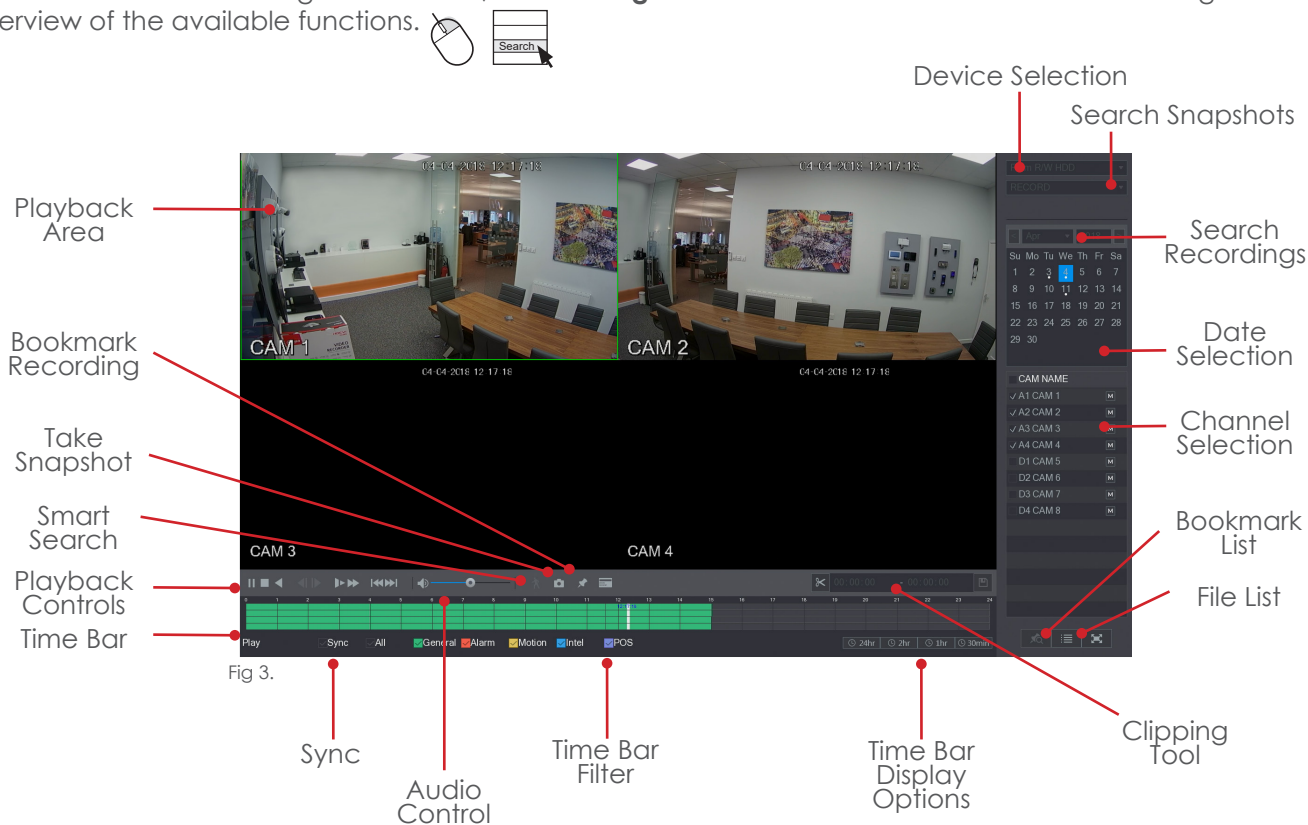
Fig 2.

* Feature is considered an engineer function. It is recommended care is taken when accessing these functions.

PLAYBACK OPERATION

Time Bar Playback

To review recorded footage on the unit, click the **right** mouse button and select **Search**. See Fig 3 for an overview of the available functions.



To playback footage from a specific time period, use the **left** mouse button to select the date, view type and camera channels. The timebar should display available recordings for the chosen cameras and date. To start playback double click the **left** mouse button on the desired area of the time bar.

- Time Bar Filters

The timebar filters the recordings based on type, use the filters at the bottom of the timebar to show or hide types of recordings.
- Sync

With the sync option selected, when double clicking the **left** mouse button to start playback all cameras in the chosen view will playback at the same time. With sync unchecked only the camera that is clicked on will start to play. This allows different channels to playback different times simultaneously.
- Audio Control

Adjust the slider bar up or down to increase or decrease the volume level.
- Bookmark Recordings

Select the bookmark option during playback to place a marker for later viewing. Bookmarked recordings can be viewed in the Bookmark List option.
- Device Selection

Use this option to playback copied footage from a USB memory stick or DVD.
- Take Snapshot

During playback select this option to save a still image to a USB memory stick.

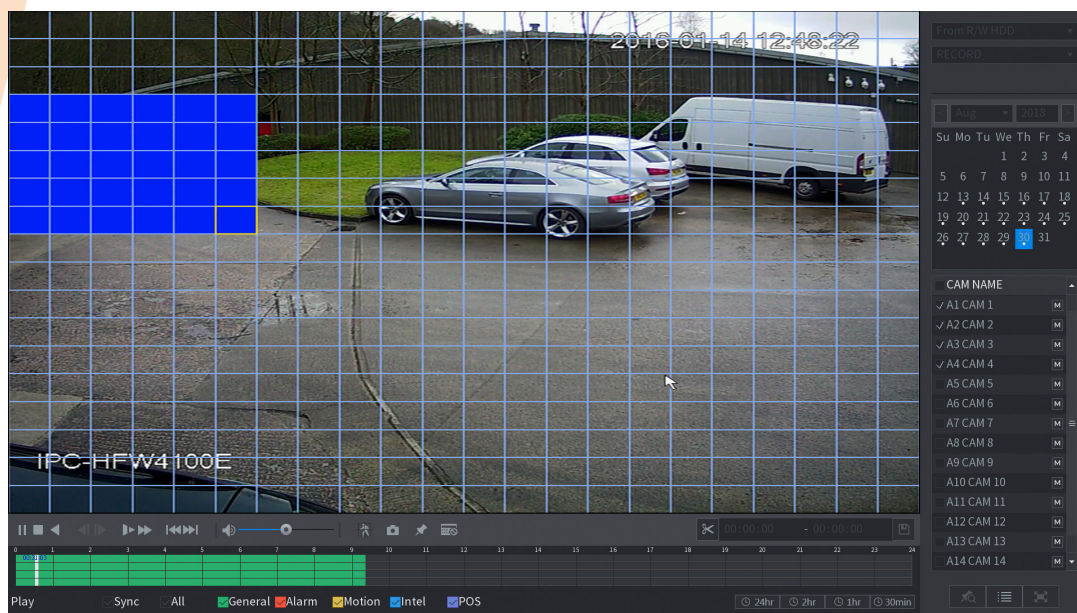
Smart Search

Smart search can be used to playback footage where movement has occurred on a specific section of the camera image. To playback using smart search see the steps below.


Note: Motion Detection MUST be enabled on the camera for smart search to work and is only supported when using Dahua cameras.

Start playback and display the desired camera channel in single screen view.

Select the  icon, a grid will be displayed over the camera image.



Hold the **left** mouse button to draw a box around the area of interest. 

Once done release the **left** mouse button and select the  icon, the system will now playback footage where movement has taken place within the chosen area.

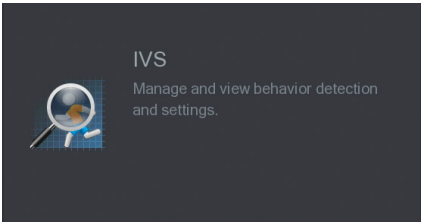


Intelligent Search

Note: Intelligent Search is only available if Intelligent events have been configured by the engineer.

Intelligent search is designed to playback events such as Tripwires, Intrusion or Abandoned/Missing object.

To view a list of intelligent snapshots, first enter the main menu and select IVS using the **left** mouse button.

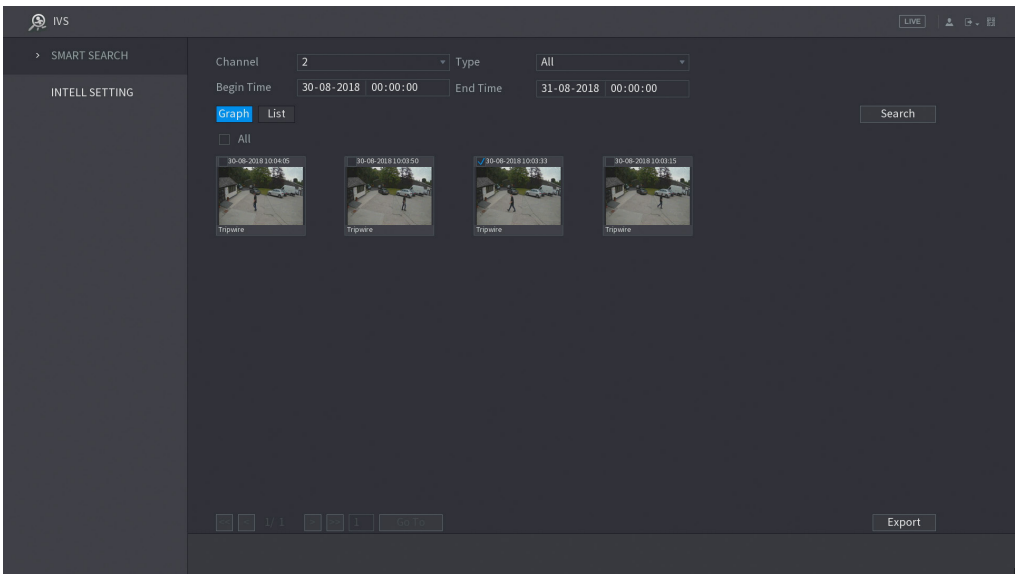


Select the channel number to search using the **Channel** dropdown box.

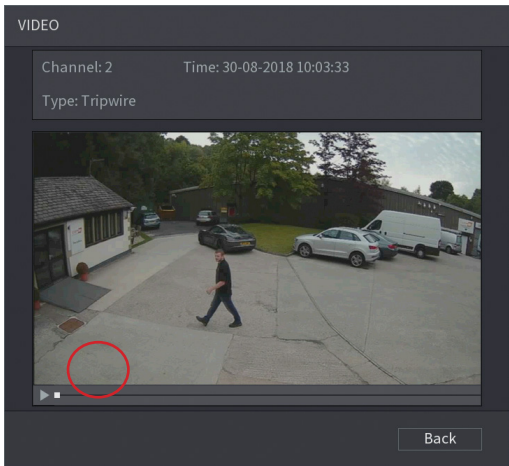
The type of events to search can be filtered using the **Type** drop down box.

Enter the required search period by selecting the **Begin** and **End** times using the **left** mouse button.

Click **Search** to display a selection of snapshots that match the search criteria.



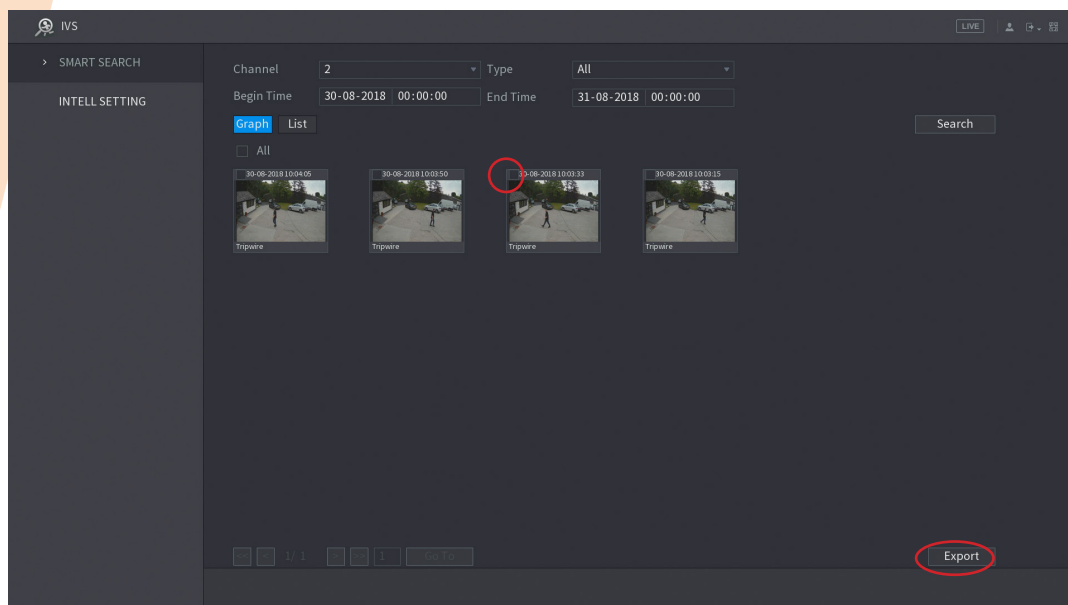
To playback an event, simply select it using the **left** mouse button and click the play button.



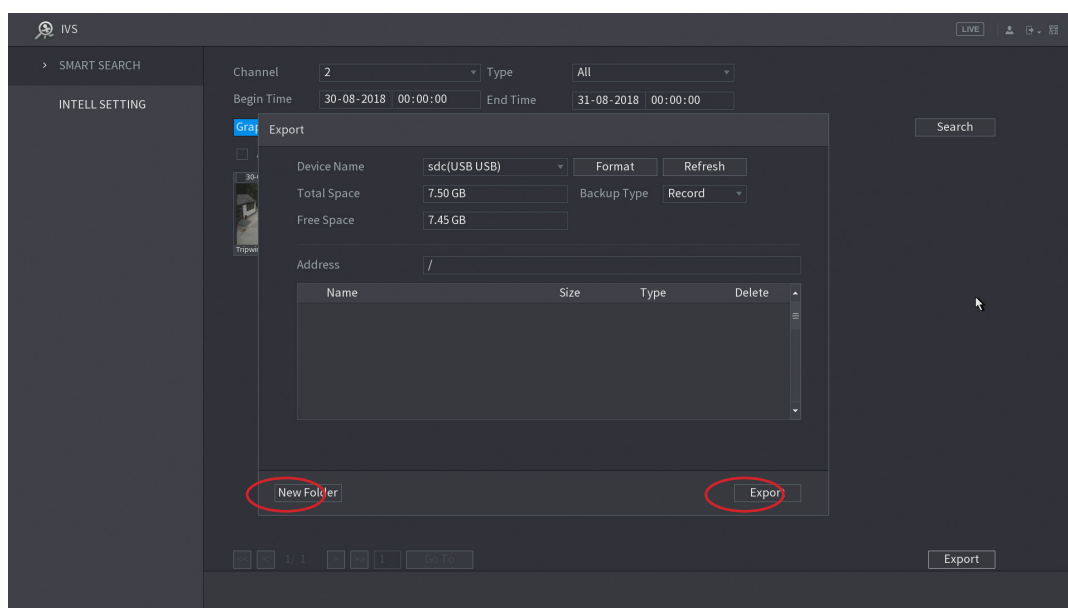
Export Intelligent Event

After performing an Intelligent Search (page 9) it is possible to perform an export of the video events to a USB memory stick quickly.

Select the video clips to export by checking the tick box using the **left** mouse button.



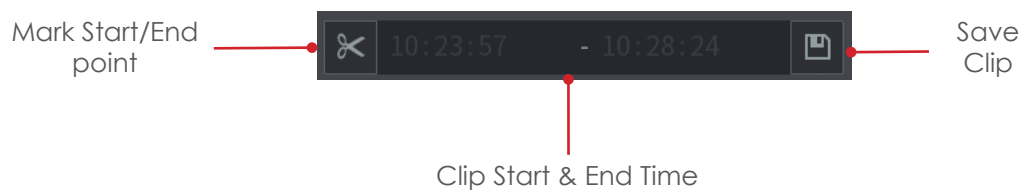
Once the desired video clips have been selected, **left** click the export button. A USB memory stick must be connected before proceeding.



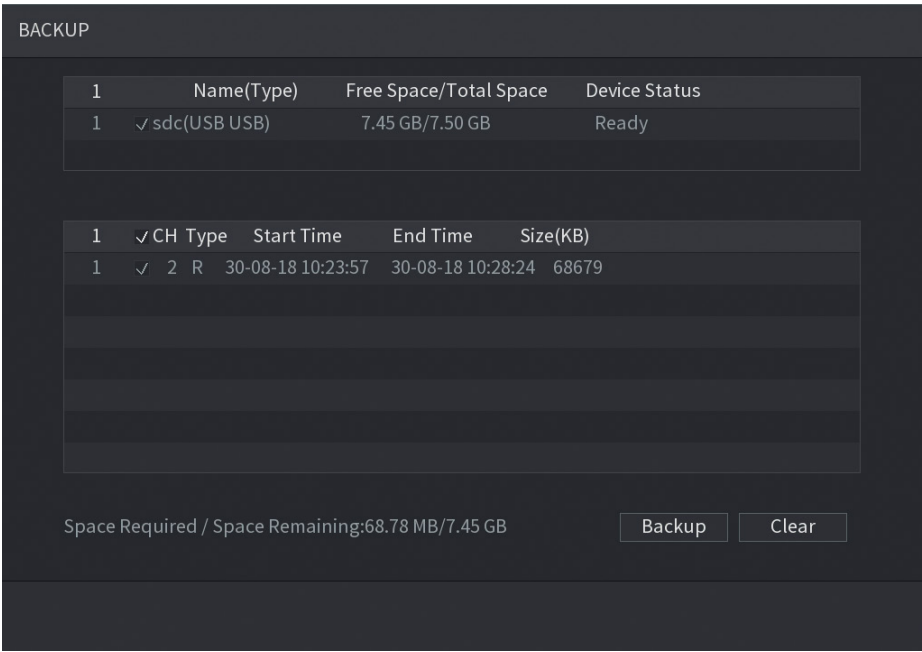
The contents of the USB memory stick will now be displayed. It is possible to create a new folder for the backup using the new folder button or simply **left** click the export button to begin the export.

Clipping Tool

The clipping tool feature is a built in method to quickly backup individual incidents by marking the start and end points to copy, it is located in the bottom right of the playback interface.



- To backup recordings using the clipping tool follow the steps below.
- Start playback and navigate to the point at which to start the copy.
- Mark the clipping start point by clicking the **Mark Start/End** button.
- Navigate to the copy end point.
- Mark the clipping end point by clicking the **Mark Start/End** button again.
- With a USB memory stick connected, Click the **Save Clip** button to enter the backup menu.



- Select the device that will be used for the backup in the top list.
- Select which files to copy in the bottom list.
- Click the **Backup** button to proceed to the next step (See page 12).

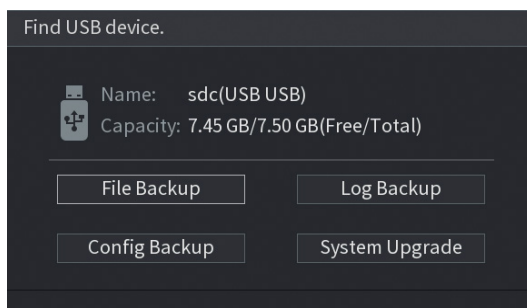
BACKUP & PC PLAYBACK

Backup

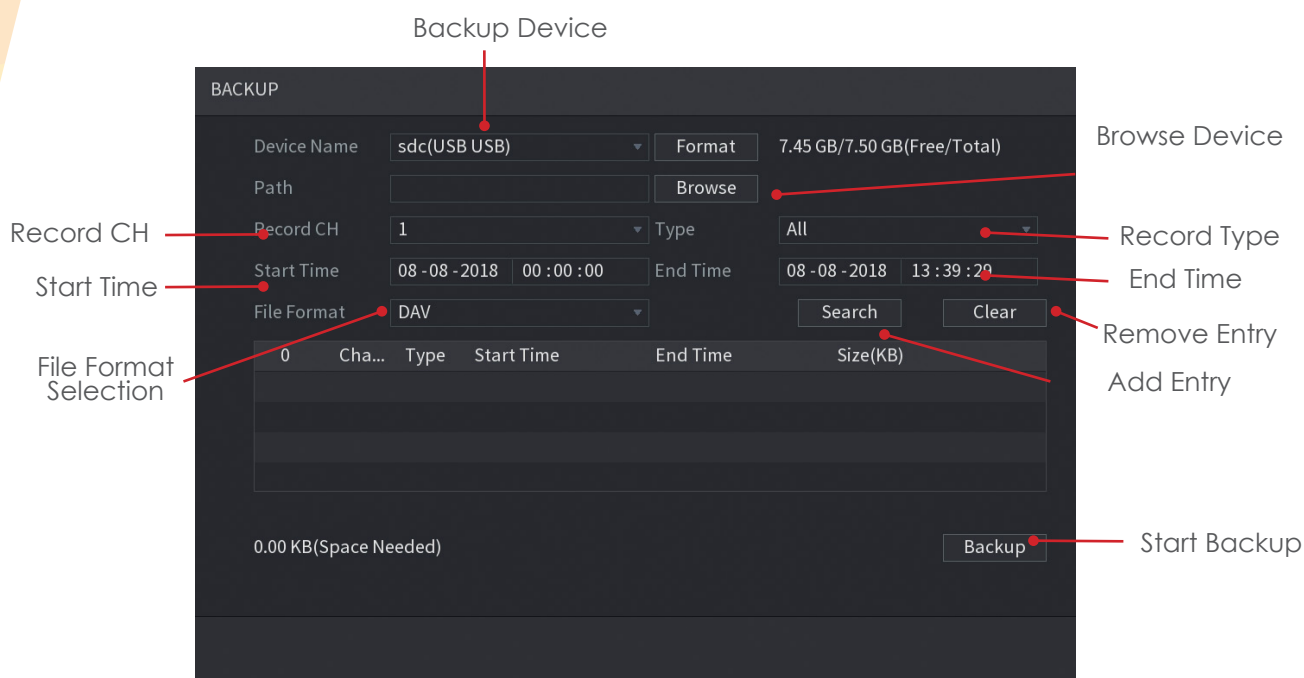
When exporting video recordings from the system on to an external device the backup feature is used.

To access the backup menu insert a USB media device into the USB port of the system, the **find USB device** pop up window should appear.

Select **File Backup**, the backup menu will now be displayed.



Alternatively, enter the main menu of the system and select the **backup** option.



With the Backup menu displayed it is possible to add specific dates/times, camera channels and record types. Multiple backup entries can be created so that different incidents can be backed up simultaneously.

To create an entry to be copied follow the steps below.

Select the Backup media to be used (USB / Internal CD/DVD Drive) by clicking the **Browse** button.

Click the **Device Name** dropdown box and select your backup device.

When backing up to USB devices it is recommended that a format is performed. Click the **Format** button in the top right corner of the window before attempting to backup to perform a format.

Note: Formatting the USB device will delete all data on the device!

Once the correct backup device has been selected click the **Save** button.

Select the type of record to be copied by selecting the **Type** dropdown box. There are multiple options including Regular (Continuous, Motion Detection Intelligent & Alarm).

Input the time to start the backup from in the **Start Time** field.

Input the time to stop the backup in the **End Time** field.

Select which camera to copy by clicking the **Record CH** dropdown box.

Select the file format to use for the copy by click the **File Format** dropdown box, recommended option is DAV.

Click the **Search** button to add as an entry in the backup list.

The screenshot shows the 'BACKUP' configuration window. At the top, there's a 'Device Name' dropdown set to 'sdc(USB USB)' and a 'Format' field showing '7.45 GB/7.50 GB(Free/Total)'. Below this is a 'Path' field with 'backup/' and a 'Browse' button. The 'Record CH' is set to '1' and 'Type' is set to 'All'. 'Start Time' is '30-08-2018 11:00:00' and 'End Time' is '30-08-2018 13:39:29'. 'File Format' is set to 'DAV'. There are 'Search' and 'Clear' buttons. Below these fields is a table with the following data:

1	✓ Channel	Type	Start Time	End Time	Size(KB)
1	✓ 1	R	30-08-18 11:00:00	30-08-18 11:58:20	441502

At the bottom, it says '432.86 MB(Space Needed)' and has a 'Backup' button.

Click the **Backup** button to move to the next step, if more entries are required input them before proceeding.

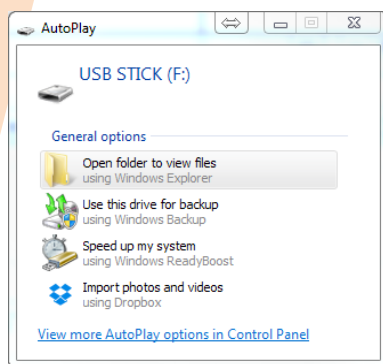
This screenshot shows the same 'BACKUP' configuration window, but now it's in the middle of a backup process. The 'Backup' button from the previous screen is now a 'Stop' button. A progress bar is visible at the bottom, and next to it, it says 'Remaining Time 00:02:57'. The table and other configuration fields remain the same as in the previous screenshot.


During the backup process a progress bar is displayed with an estimated completion time. Once the backup is finished a Backup Completed message will be displayed.

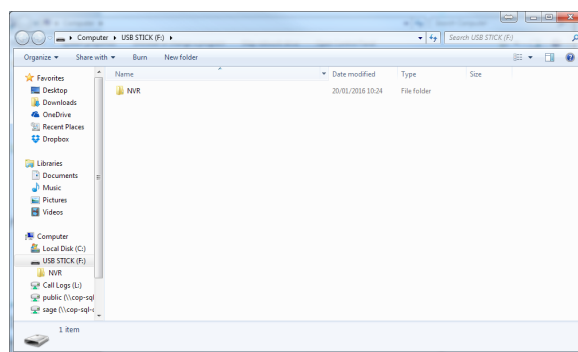
PC Playback

When footage is copied from the DVR/NVR to a media device such as a USB memory stick or CD/DVD disk, the playback software is also copied automatically. The following section only applies to Windows based computers, for Apple MAC computers the **Smart Player** program for MAC must be used.

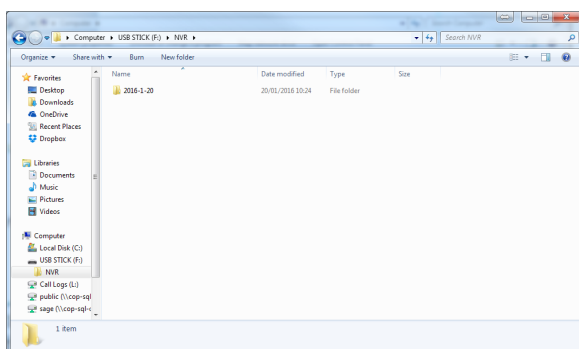
To playback footage from the media device, insert the media into the PC and follow the steps below:



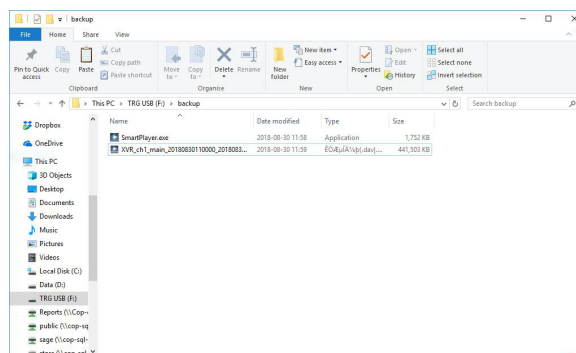
A windows pop up should appear, click **Open folder to view files** 



With the media directory shown, double click the DVR/NVR folder. 



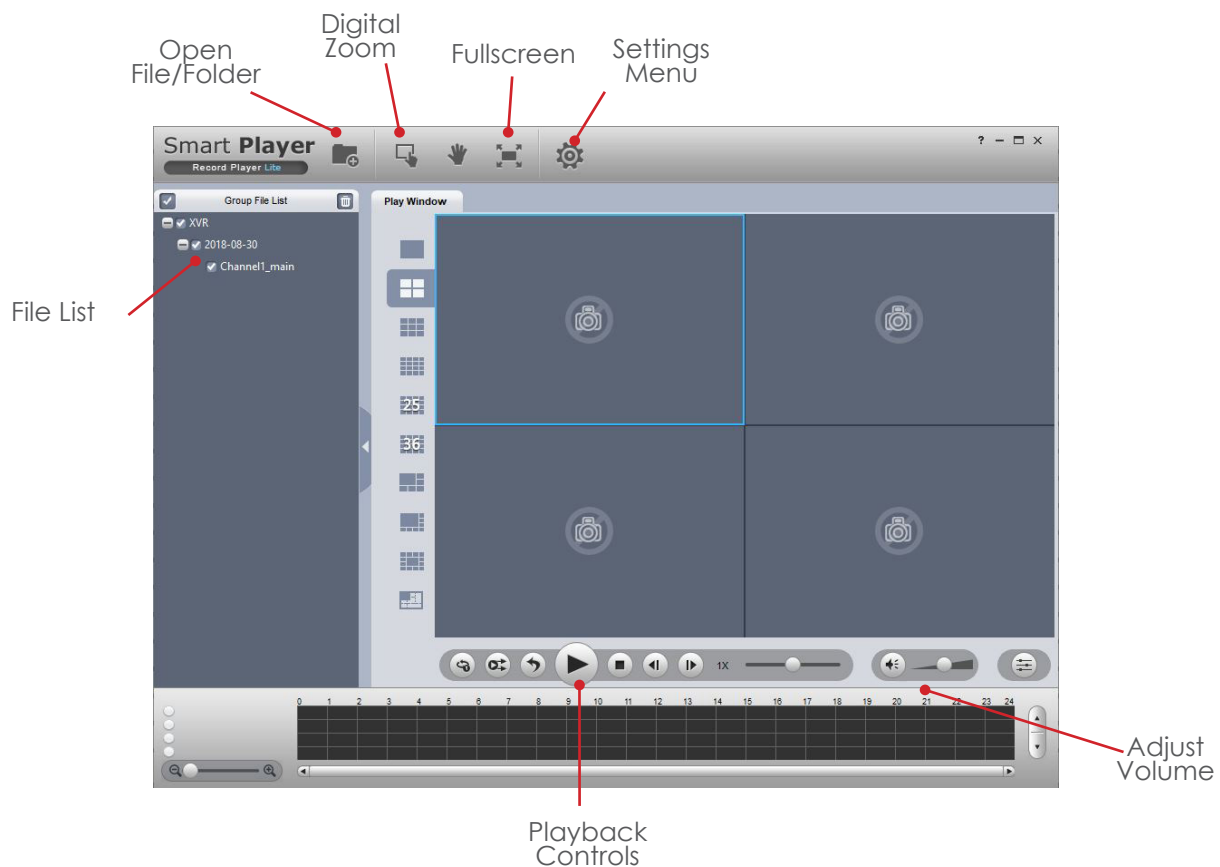
Any footage copied from the DVR/NVR should be arranged in folders by date. Double click the folder for the date you wish to playback.



Now the contents of the folder will be displayed, double click **Smart Player** to run the playback program.

After double clicking the **Smart Player** program, the playback software should open and available video files will be displayed in the file list.

To start playback double **left** click the file in the file list.



Smart Player v4

Smart Player v4 is an alternative to the basic playback software, offering a wider range of features. Smart Player is available to download for both Windows and Apple OS.

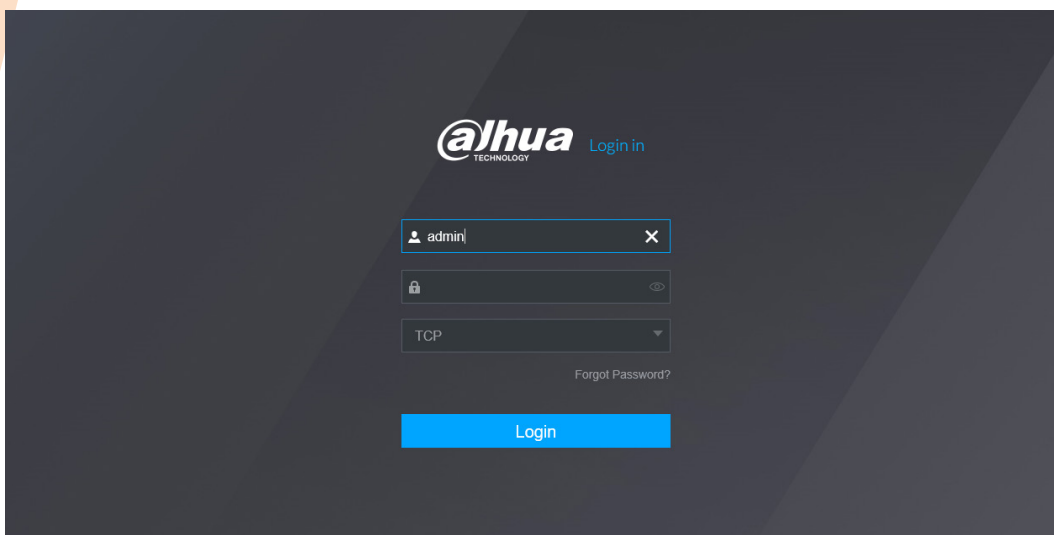


REMOTE ACCESS

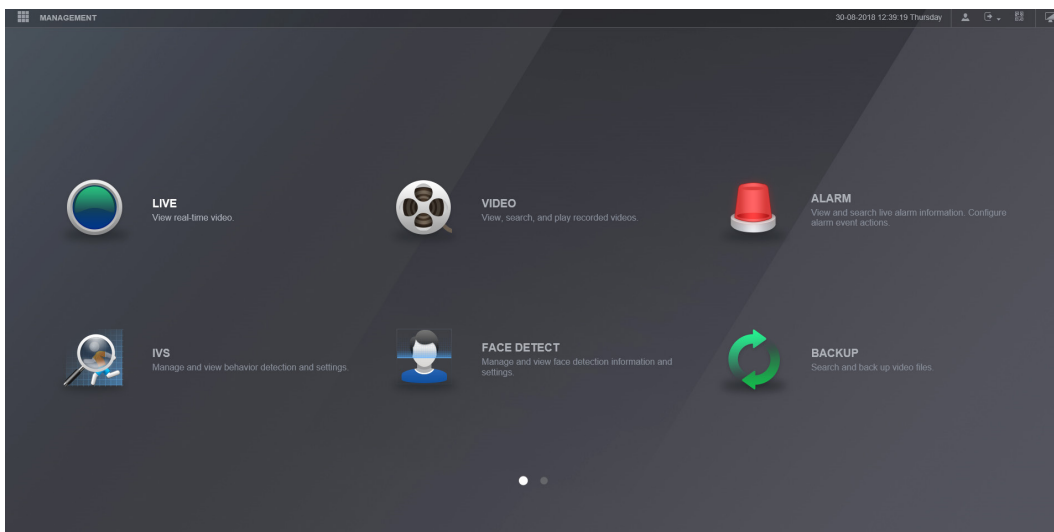
Web Browser Operation

All Dahua DVRs and NVRs are fully accessible using the built in web browser interface. Multiple internet browsers are supported including; Internet Explorer and Safari (MAC). The following section of this guide is based on Internet Explorer.

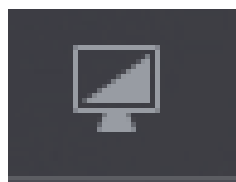
To access the XVR type the IP address or domain into the web browser address bar (this should of been provided by your CCTV engineer). When the web browser login page is displayed enter your login credentials and click the **Login** button.



To view the live streams from the camera system, **left** click the Live option

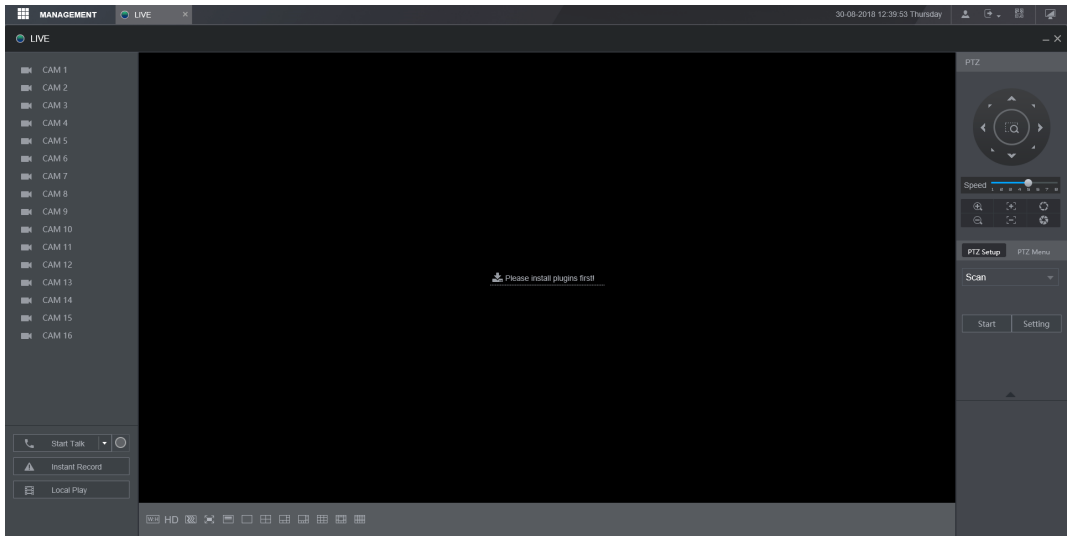


When operating the web browser, select the monitor icon to return to the main menu.



Before viewing the live cameras, the web browser plugin must be installed.

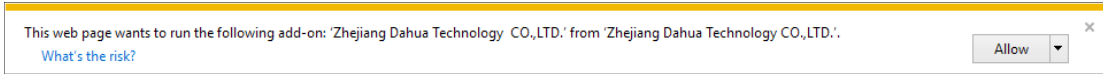
Left click the “Please install plugin” option.



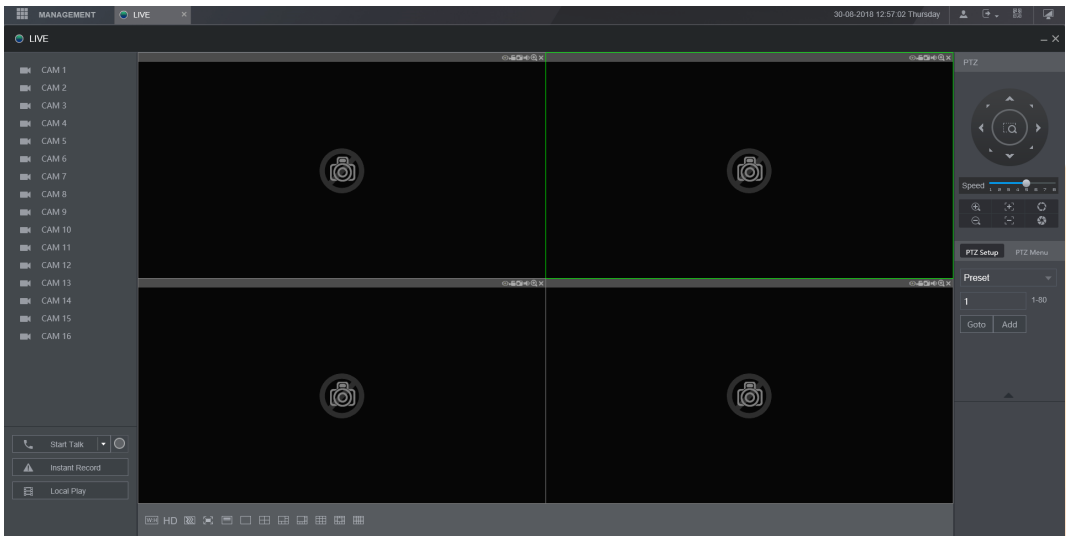
When prompted click **run** to run the plugin setup program.



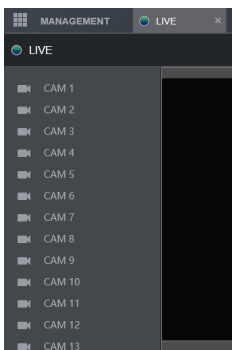
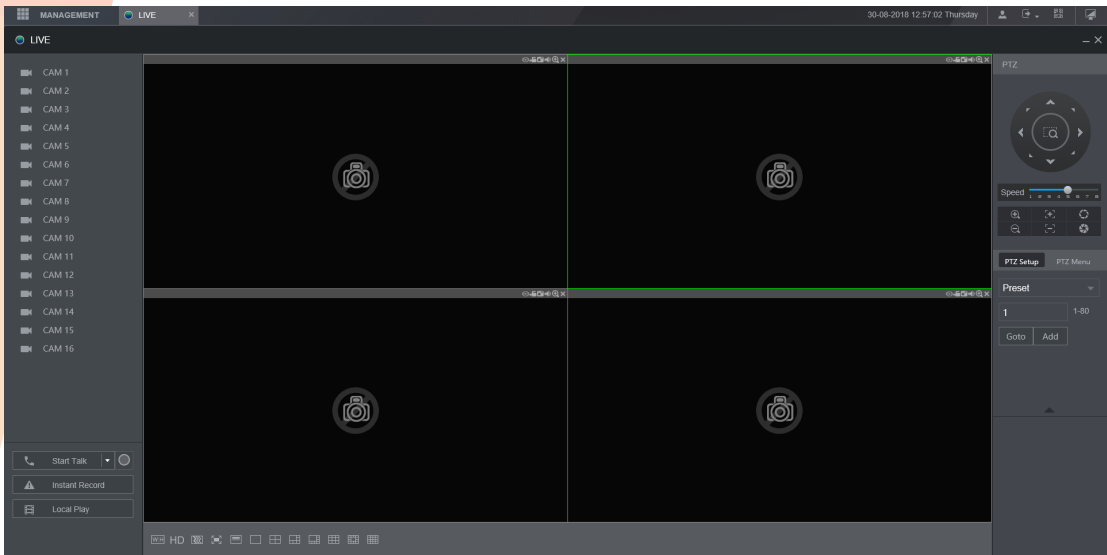
Click **Allow** to run the plugin.



Re-enter your login information to log back into the system, then select the Live option.

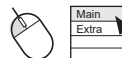


After entering the Live section of the web browser, the following page is displayed.

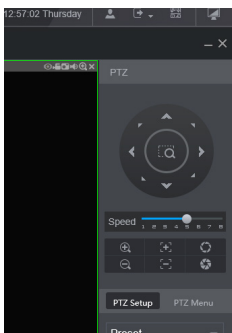


Channel List

To start viewing camera images click the channel names to stream within the channel list. Click the down arrow to select **Main Stream** or **Extra Stream**.



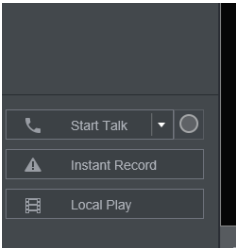
Where slow internet connections may be an issue, Extra Stream can be used to view a lower quality stream that may improve performance.



PTZ control

Use the PTZ function buttons to control PTZ cameras. Options include Pan, Tilt, Zoom, Go to Preset and more.

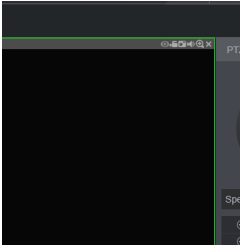
Function Controls



Start Talk
Instant Record
Local Play

Use for bi-directional talk
Record the live image to the computer
Playback recorded files stored on the computer

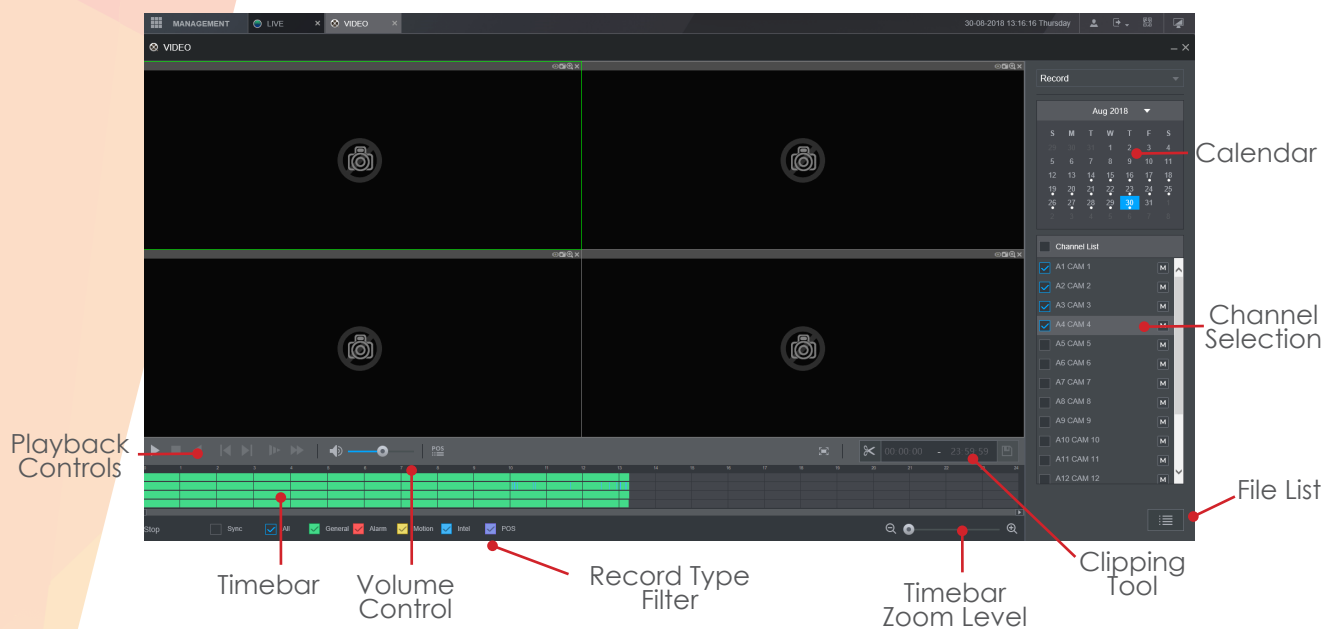
Channel Options



Options from left to right:

Digital Zoom Zoom in on camera image
Instant Record Record the live image to the computer
Snapshot Capture still image and save to the computer
Audio Toggle camera audio on or off
Close Stop streaming camera image

Web Playback



To playback a specific time from the system, follow the steps below:

Select the desired date using the **Calendar**

Select how many cameras to play using the **Channel Selection** area, such as a single camera or four.

The **Timebar** should now populate with all available recordings for the chosen date. The coloured segments represent the type of record. Green indicates continuous record, whereas Yellow and Red represent Motion Detection and Alarm Inputs respectively.

Single click a desired area along the **timebar** to playback footage from this time. 

Use the **Playback Controls** to Pause, Stop, Change Play Direction and also increase or decrease the play speed.

Double click a camera channel to display that channel in single screen. 

Clipping Tool

The clipping tool feature is a built in method to quickly backup individual incidents by marking the start and end points to copy, it is located in the bottom right of the playback interface.

Click the **Scissor** icon to enable clipping mode.

A white arrow symbol should appear at both the start and end of the timbar.

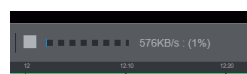
Mark the start point by sliding the **left** arrow to the time where the copy should start.



Mark the end point by sliding the **right** arrow to the time where the copy should end.

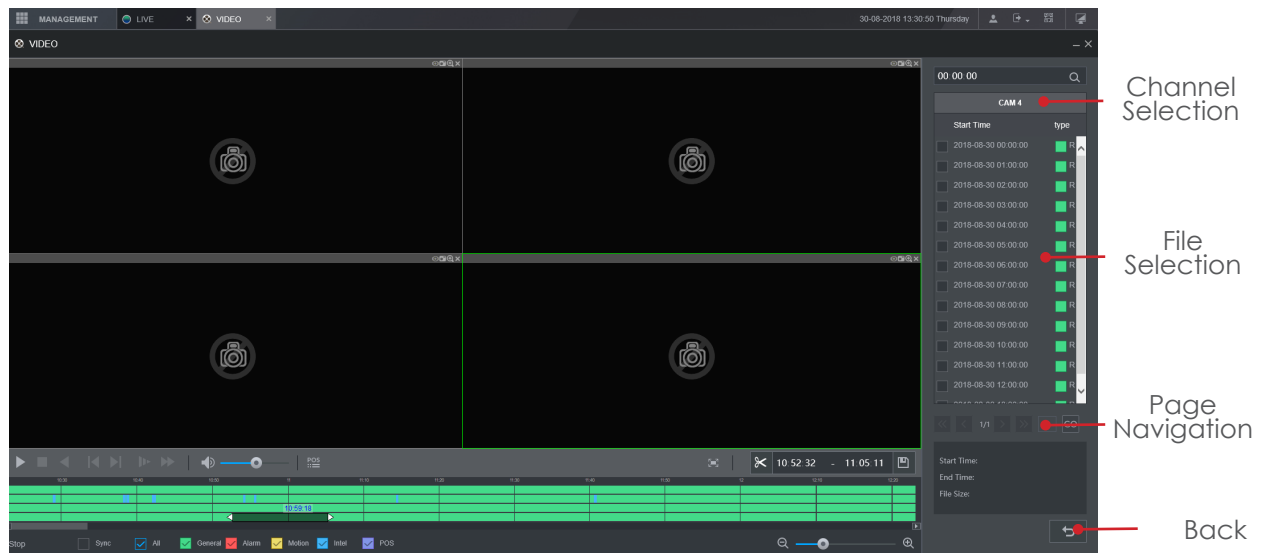
To start the copy, click the **Save** icon and choose a Save path.

A progress bar will now appear in place of the Clipping tool. When the bar reaches 100% the copy is complete.



Playback by File

Click the **File List** button to list all of the available recordings by file rather than by time. By default each channels recordings are stored as individual 60 minute files. (Excluding Event files)

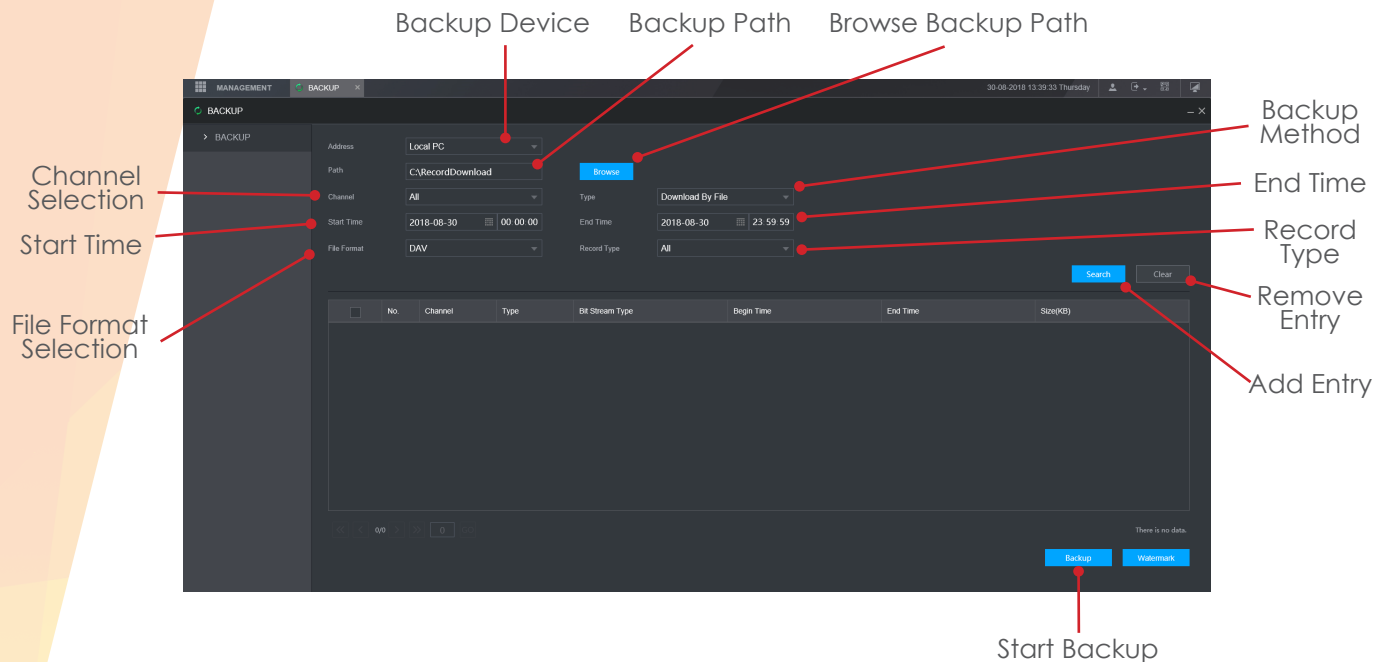


Click the desired file in the list to start playback.

Backup

From the main menu select the **Backup** option.

Alternatively, enter the main menu of the system and select the **backup** option.



To copy a specific time range to the computer first select which channel to copy using the **Channel Selection** box.

Input a time and date range to copy using the **Start Time** and **End Time** selection boxes.

Click **Search** to perform a search of the entered criteria.

Click **Backup** to begin the backup process.

