

## HikCentral-Workstation/32

HikCentral-Workstation/32 is a flexible, reliable, and powerful central security system.

HikCentral-Workstation/32 provides central management, information sharing, convenient connection and multi-service cooperation. It is capable of adding devices for management, live view, storage and playback of video files, alarm linkage, access control, facial identification, and so on.



### Key Feature

#### Live View and Playback

- Custom window division configurable
- Viewing real-time events during live view and playback
- Adding tags during playback and playing tagged video
- Transcoded playback, frame- extracting playback, and stream type self-adaptive
- Fisheye Dewarping

#### Visual Tracking

#### Recording and Storage

- Recording schedule for continuous recording, event recording and command recording
- Storing videos on encoding devices
- Providing video copy-back
- Storing alarm pictures on NVRs

#### Event Management

- Camera linkage, alarm pop-up window and multiple linkage actions
- Multiple events for video security, access control, resource group, resource maintenance, etc.

#### Access Control and Video Intercom

- Setting schedules for free access status and access forbidden status of doors
- Supports multiple access modes for both card reader authentication and person authentication
- Setting access groups to relate persons, templates, and access points, which defines the access levels of different persons
- Supports advanced functions such as multi-factor authentication, anti-passback, and multi-door interlocking
- Controlling door status in real-time
- Calling indoor station by the Control Client
- Calling the platform by door station and indoor station, and answering the call by the Control Client

#### Security Control

- Real-time alarm management for added security control panels
- Adding zone as hot spot on E-map and viewing the video of the linked camera
- Event and alarm linkage with added cameras, including pop-up live view, captured picture
- Subscribing the events that the Control Client can display in real-time
- Acknowledging the received alarm on the Control Client



### **Entrance and Exit Control**

- Managing parking lot, entrances and exits, and lanes. Supports linking a LED screen with lane for information display
- Setting entry & exit rules for vehicles in the vehicle lists as well as vehicles not in any vehicle lists
- Entrance and exit control based on license plate recognition, card, or video intercom
- Viewing real-time and history vehicle information and controlling barrier gate manually on the Control Client

### **Temperature Screening**

- Displaying the skin-temperature and whether wearing a mask or not about the recognized persons in real time
- Triggering events and alarms when detects abnormal temperature and no mask worn
- Viewing reports about skin-surface temperature and mask-wearing

### **Face and Body Recognition**

- Displaying the information of the recognized persons in real-time
- Searching history records of recognized persons, including searching in captured pictures, searching matched persons, searching by features of persons, and searching frequently appeared persons

### **Network Management**

- Managing network transmission devices such as switches, displaying the network connection and hierarchical relationship of the managed resources by a topology
- Viewing the network details between the device nodes in the topology, such as downstream and upstream rate, port information, etc. and checking the connection path
- Exporting the topology and abnormal data to check the device connection status and health status

## Software Specification

Features		Maximum Performance
Devices and Resources	Cameras <i>*Including ANPR Cameras and Cameras with Face Capture Function</i>	32
	Managed Device IP Addresses <i>*Including Encoding Devices, Access Control Devices, Security Control Devices, and Remote Sites</i>	128
	Video Intercom Devices <i>*Including Indoor Station</i>	8
	Alarm Inputs (Including Zones of Security Control Devices)	32
	Alarm Outputs	32
	Alarm Inputs of Security Control Devices	32
	ANPR Cameras	4
	Cameras with Face Capture Function	2
	Security Radars	2
	Areas	64
	Cameras per Area	32
	Alarm Inputs per Area	16
	Alarm Outputs per Area	16
Recording	Recording Schedule	64
	Recording Schedule Template	32
Event & Alarm	Event and Alarm Rules	128
	Storage of Events or Alarms without Pictures	5/s
	Events or Alarms Sent to Clients <i>*The clients include Control Clients and Mobile Clients.</i>	5/s 8 Clients/s
	Notification Schedule Templates	100
Picture	Picture Storage <i>*Including event/alarm pictures, face pictures, and vehicle pictures.</i>	5/s
Reports	Regular Report Rules	64
	Event or Alarm Rules in One Event/Alarm Report Rule	32
	Records in One Sent Report	10,000 or 10 MB
	Resources Selected in One Report <i>*With this limitation, you can generate a neat and clear report via the Control Client and it costs less time.</i>	20
Data Storage	Data Retention Period	Stored for 6 Months
Users and Roles	Concurrent Accesses via Web Clients and Control Clients	8
	Concurrent Accesses via Mobile Clients	8
	Users	8
	Roles	8
Vehicle (ANPR)	Vehicle Lists	50
	Vehicles per Vehicle List	500
Entrance & Exit	Lanes	4
	Cards Linked with Vehicles	2,500
	Vehicle Passing Frequency in Each Lane	1 Vehicle/s
Face Comparison	Persons with Profiles for Face Comparison	10,000
	Face Comparison Groups	16
	Persons in One Face Comparison Group	1,000
Access Control	Persons with Credentials for Access Control	3,000
	Total Credentials (Card + Fingerprint)	15,000
	Cards	15,000
	Fingerprints	12,000
	Profiles	3,000

	Access Points (Doors+Outdoor Station)	8
	Access Groups	32
	Persons in One Access Group	3,000
	Access Levels	16
	Access Schedules	32

## Decoding Performance of Control Client

Resolution	Maximum Hardware Decoding Channels	Maximum Software Decoding Channels
1920 × 1080	6	4
2560 × 1440	3	2
3840 × 2160	1	1
2560 × 2560 (Fisheye Camera)	2	2
4000 × 4000 (Fisheye Camera)	1	1

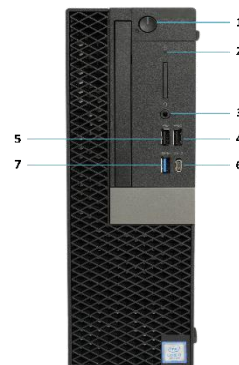
## Hardware Specification



<b>Processor</b>	Intel® Core™ i3-8100 (4Cores/6MB/4T/ 3.6GHz/65W);
<b>Operating Systems</b>	Microsoft® Windows 10 IoT Ent (64-bit)
<b>Memory</b>	2 × 4GB 2666MHz DDR4 UDIMM
<b>Graphics Card</b>	Integrated Intel® HD Graphics 630
<b>Storage</b>	M.2 256GB SATA Class 20 solid state drive
<b>NIC</b>	Integrated Intel I219-LM Ethernet LAN 10/100/1000
<b>I/O Ports</b>	10 External USB: 1 × USB Type-C 3.1 Gen 2, 5 × 3.1 Gen 1 Type-A (1 Front, 4 Rear), 4 × USB 2.0, 1 × RJ-45, 2 × Displayport, 1 × Serial, 2 × PS/2
<b>Form Factor</b>	Small Form Factor
<b>Power Supply</b>	300W typical 90% Efficient PSU (80 PLUS Bronze)
<b>Dimensions (H × W × D)</b>	29cm × 9.26cm × 29.2cm (11.42" × 3.7" × 11.5")
<b>Weight</b>	7.57lbs / 5.26kg
<b>Certification</b>	CE, FCC, UL
<b>Warranty</b>	36 Months

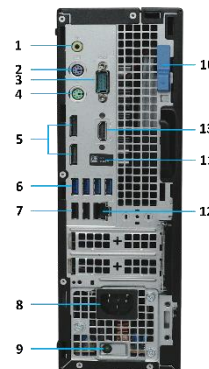
### Front View

- 1- Power Button and Power Light
- 2- Hard Drive Activity Light
- 3- Headset/Universal Audio Jack Port
- 4- USB 2.0 Port with PowerShare
- 5- USB 2.0 Port
- 6- USB 3.1 Gen 2 Port with PowerShare



### Back View

- 1- Line-Out Port
- 2- PS/2 Keyboard Port
- 3- Serial Port
- 4- PS/2 Mouse Port
- 5- Display Ports
- 6- USB 3.1 Gen 1 Ports
- 7- USB 2.0 Ports (Supports SmartPower On)
- 8- Power Connector Port
- 9- Power Supply Diagnostic Light
- 10- Release Latch
- 11- Service Tag Label
- 12- Network Port
- 13- HDMI Port



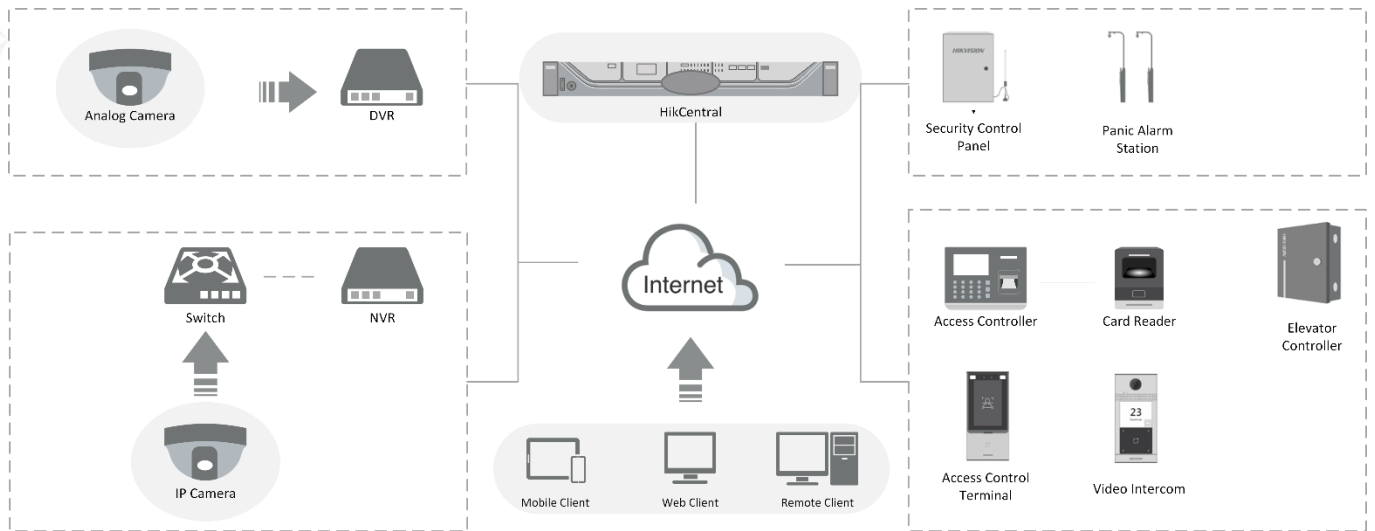
**Note:** By default, the DP to VGA adapter will be provided.

## System Requirement

\* For high stability and good performance, the following system requirements must be met.

Feature	Description
<b>OS for Control Client</b>	Microsoft® Windows 7 SP1 (32/64-bit) Microsoft® Windows 8.1 (32/64-bit) Microsoft® Windows 10 (64-bit) Microsoft® Windows Server 2008 R2 SP1 (64-bit) Microsoft® Windows Server 2012 (64-bit) Microsoft® Windows Server 2012 R2 (64-bit) Microsoft® Windows Server 2016 (64-bit) Microsoft® Windows Server 2019 (64-bit) <i>*For Windows 8.1 and Windows Server 2012 R2, make sure it is installed with the rollup (KB2919355) updated in April, 2014.</i>
<b>Browser Version</b>	Internet Explorer 10/11 and above Chrome 61 and above Firefox 57 and above Safari 11 and above (running on Mac OS X 10.3/10.4)
<b>Database</b>	PostgreSQL V9.6.13
<b>OS for Smartphone</b>	iOS 10.0 and later Android phone OS version 5.0 or later, and dual-core CPU with 1.5 GHz or above, and at least 2G RAM
<b>OS for Tablet</b>	iOS 10.0 and later Android tablet with Android OS version 5.0 and later

## Typical Application



Distributed by

**HIKVISION®****Headquarters**

No.555 Qianmo Road, Binjiang District,  
Hangzhou 310051, China  
T +86-571-8807-5998  
overseasbusiness@hikvision.com

**Hikvision USA**  
T +1-909-895-0400  
sales.usa@hikvision.com

**Hikvision Australia**  
T +61-2-8599-4233  
salesau@hikvision.com

**Hikvision India**  
T +91-22-28469900  
sales@pramahikvision.com

**Hikvision Canada**  
T +1-866-200-6690  
sales.canada@hikvision.com

**Hikvision Thailand**  
T +662-275-9949  
sales.thailand@hikvision.com

**Hikvision Europe**  
T +31-23-5542770  
sales.eu@hikvision.com

**Hikvision Italy**  
T +39-0438-6902  
info.it@hikvision.com

**Hikvision Brazil**  
T +55 11 3318-0050  
Latam.support@hikvision.com

**Hikvision Turkey**  
T +90 (216)521 7070- 7074  
sales.tr@hikvision.com

**Hikvision Malaysia**  
T +601-7652-2413  
sales.my@hikvision.com

**Hikvision UK & Ireland**  
T +01628-902140  
sales.uk@hikvision.com

**Hikvision South Africa**  
Tel: +27 (10) 0351172  
sale.africa@hikvision.com

**Hikvision France**  
T +33(0)1-85-330-450  
info.fr@hikvision.com

**Hikvision Kazakhstan**  
T +7-727-9730667  
nikia.panfilov@hikvision.ru

**Hikvision Vietnam**  
T +84-974270888  
sales.vt@hikvision.com

**Hikvision UAE**  
T +971-4-4432090  
salesme@hikvision.com

**Hikvision Singapore**  
T +65-6684-4718  
sg@hikvision.com

**Hikvision Spain**  
T +34-91-737-16-55  
info.es@hikvision.com

**Hikvision Tashkent**  
T +99-87-1238-9438  
uzb@hikvision.ru

**Hikvision Hong Kong**  
T +852-2151-1761  
info.hk@hikvision.com

**Hikvision Russia**  
T +7-495-669-67-99  
sateru@hikvision.com

**Hikvision Korea**  
T +82-(0)31-731-8817  
sales.korea@hikvision.com

**Hikvision Poland**  
T +48-22-460-01-50  
info.pl@hikvision.com

**Hikvision Indonesia**  
T +62-21-2933759  
Sales.Indonesia@hikvision.com

**Hikvision Colombia**  
sales.colombia@hikvision.com